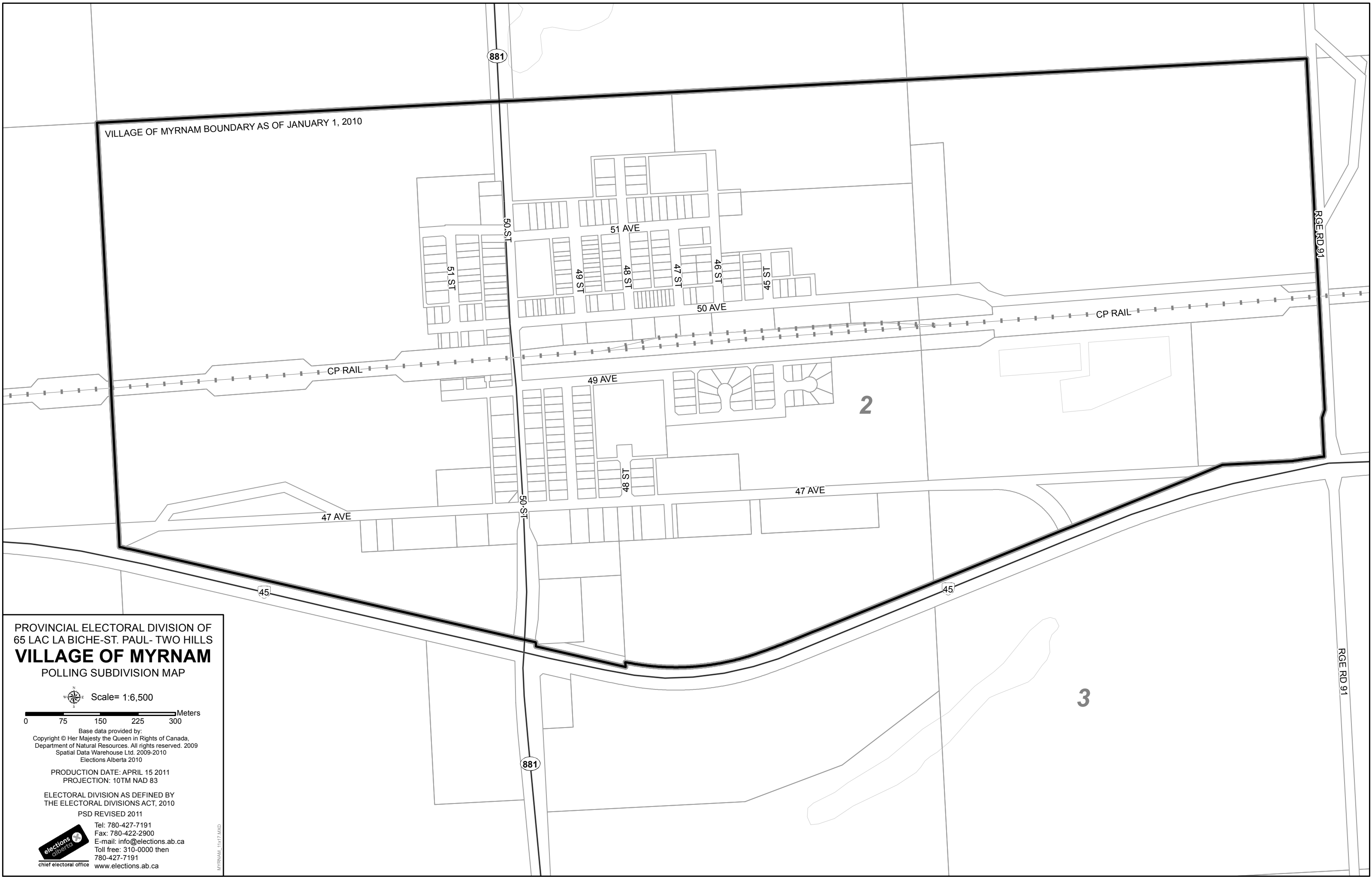
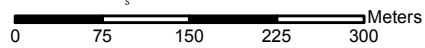


VILLAGE OF MYRNAM BOUNDARY AS OF JANUARY 1, 2010



PROVINCIAL ELECTORAL DIVISION OF  
65 LAC LA BICHE-ST. PAUL- TWO HILLS  
**VILLAGE OF MYRNAM**  
POLLING SUBDIVISION MAP

Scale= 1:6,500



Base data provided by:  
Copyright © Her Majesty the Queen in Rights of Canada,  
Department of Natural Resources. All rights reserved. 2009  
Spatial Data Warehouse Ltd. 2009-2010  
Elections Alberta 2010

PRODUCTION DATE: APRIL 15 2011  
PROJECTION: 10TM NAD 83

ELECTORAL DIVISION AS DEFINED BY  
THE ELECTORAL DIVISIONS ACT, 2010

PSD REVISED 2011

Tel: 780-427-7191  
Fax: 780-422-2900  
E-mail: info@elections.ab.ca  
Toll free: 310-0000 then  
780-427-7191  
www.elections.ab.ca



chief electoral office

MYRNAM-11617.AMD