



62

55

2A

54

43

53

42

45

56

57

36

46

47

52

58

41

40

48

50

35

49

38

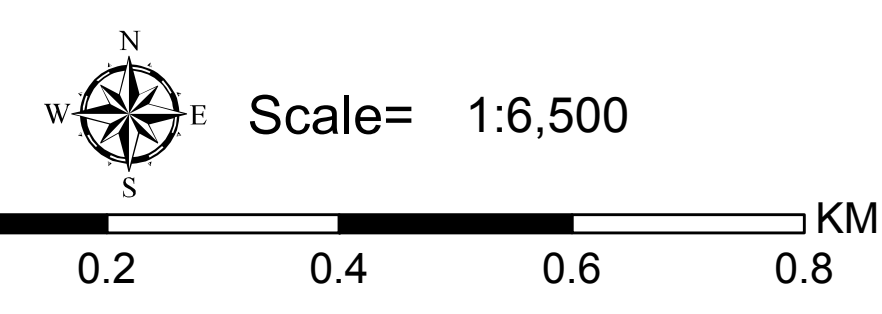
37

39

48

51

**PROVINCIAL ELECTORAL DIVISION OF  
86 WETASKIWIN-CAMROSE  
CITY OF WETASKIWIN  
POLLING SUBDIVISION MAP**



Base data provided by:  
Copyright © Her Majesty the Queen in Rights of Canada,  
Department of Natural Resources. All rights reserved. 2014  
Spatial Data Warehouse Ltd. 2009-2014  
Elections Alberta 2010

RELEASE DATE: FEB 2015  
PROJECTION: 10TM NAD 83

ELECTORAL DIVISION AS DEFINED BY  
THE ELECTORAL DIVISIONS ACT, 2010  
PSD REVISED 2011



Tel: 780-427-7191  
Fax: 780-422-2900  
E-mail: info@elections.ab.ca  
Toll free: 310-0000 then  
780-427-7191  
www.elections.ab.ca

SOURCE: CITY OF WETASKIWIN (MAP DATA)

RUE RD 243

RUE RD 243

RUE RD 243

RUE RD 243

RUE RD 243

RUE RD 243

RUE RD 243

RUE RD 243