

**The Report Of The
Chief Electoral Officer
On The
Chinook By-election
Held
Monday, November 23, 1987**



Province Of Alberta

**The Report Of The
Chief Electoral Officer
On The
Chinook By-election
Held
Monday, November 23, 1987**



Province Of Alberta



Alberta Legislative Assembly
Office of the Chief Electoral Officer

West Chambers Building, Main Floor
12220 Stony Plain Road
EDMONTON T5N 3Y4
Ph. 427-7191

December 14, 1987

The Chairman
Select Standing Committee
on Legislative Offices
Legislature Building
Edmonton, Alberta

Dear Sir:

I have the privilege to enclose herewith the Report of the Chief Electoral Officer concerning the Chinook By-Election, which was held on Monday, November 23, 1987.

This Report is submitted pursuant to the provisions of Section 4(3) of the Election Act.

Should you require clarification on anything contained in this Report, or additional information, I would be pleased to respond.

Yours respectfully,

Patrick D. Ledgerwood
Chief Electoral Officer

Table of Contents

Subject	Page
Summary.....	1 - 2
Overview of Results.....	3
Statement of Results by Poll	4 - 5
Maps - Electoral Division of Chinook	6
Town of Hanna.....	7
Town of Coronation	8
Town of Oyen.....	8
Financial Summary	9

Chinook By-Election Report

Summary

The vacancy in the Electoral Division of Chinook was created by the death of the Honourable Henry Kroeger, on September 17, 1987.

This By-election was held pursuant to the provisions of the Election Act, Chapter E-2 of the Revised Statutes of Alberta, 1980, with Amendments up to and including July 16, 1985. The electoral division boundary as described in the Schedule to the Electoral Divisions Amendment Act, proclaimed April 10, 1986, was used at this By-election.

By order of the Lieutenant Governor in Council, a Writ of Election, dated October 26, 1987, was issued by the Chief Electoral Officer to Mrs. Isabel Branum, Returning Officer, pursuant to Section 36 of the Election Act.

Nomination Day was November 9, 1987 and Polling Day was November 23, 1987. Four Party candidates and one Independent candidate, each registered under the Election Finances and Contributions Disclosure Act, were nominated to contest this By-election. Advance Polls were held at four locations in the Electoral Division on November 19th, 20th and 21st. Treatment Centre Polling was conducted on polling day, November 23, 1987. A special enumeration to establish the Lists of Electors for this By-election was not necessary. Data gathered at the 1985 General Enumeration, the 1986 General Election and during the Revision Period was used to establish the Lists of Electors.

The Returning Officer announced the official results on December 03, 1987. Mrs. Shirley McClellan of the Progressive Conservative Association of Alberta was declared duly elected. The Writ of Election together with the Returning Officer's Certificate and Return confirming Mrs. Shirley McClellan's election was returned to the Chief Electoral Officer on December 14, 1987. No appeal for a judicial recount, or from any decision of the Returning Officer concerning any of the ballots, was applied for pursuant to Section 142 of the Election Act.

The Chief Electoral Officer arranged for the publication of the By-election Return in the December 31, 1987 issue of the Alberta Gazette.

Nomination deposits were forfeited by 4 of the 5 candidates. The forfeited deposits, totalling \$400.00, were paid through the Chief Electoral Officer to the Provincial Treasurer for deposit to the General Revenue Account.

A Summary of Results indicating the total votes obtained by each candidate and a Statement of Results by Poll are presented on Pages 4 and 5.

Maps of the Electoral Division of Chinook together with the towns of Hanna, Coronation, and Oyen which display numbered polling sub-divisions, are included at Pages 6, 7 and 8.

The total cost to conduct the By-election was \$37,144.00, a summary of which appears on Page 9.

Financial Statements are due to be filed with the Office of the Chief Electoral Officer, by Registered Candidates, not later than February 23, 1988, and by Registered Political Parties where required, not later than May 24, 1987. These Financial Statements will list contributions, receipts, transfers of funds/materials and expenditures concerning their campaigns. In accordance with Section 10 of the Election Finances and Contributions Disclosure Act, these Financial Statements will be available for inspection in the Public Records maintained by the Chief Electoral Officer.

Overview of Results

Candidate Ballot Identification (* Elected)	Ballots Counted For	Percentage of Votes
William Archie BALDWIN Independent	36	0.66
Lyall CURRY The Alberta Liberal Party	828	15.22
*Shirley McCLELLAN Progressive Conservative	2815	51.73
Jack RAMSAY Western Canada Concept Party of Alberta	1149	21.12
Heather ROURKE The New Democrats	613	11.27
Total Votes Counted	<u>5441</u>	<u>100.00</u>
● Total Names on Lists of Electors	10,149	
● Total Ballots Counted	5,441	
● Total Ballots Rejected	9	
● Total Ballots Cast	5,450	
● Voter Turnout	53.70%	

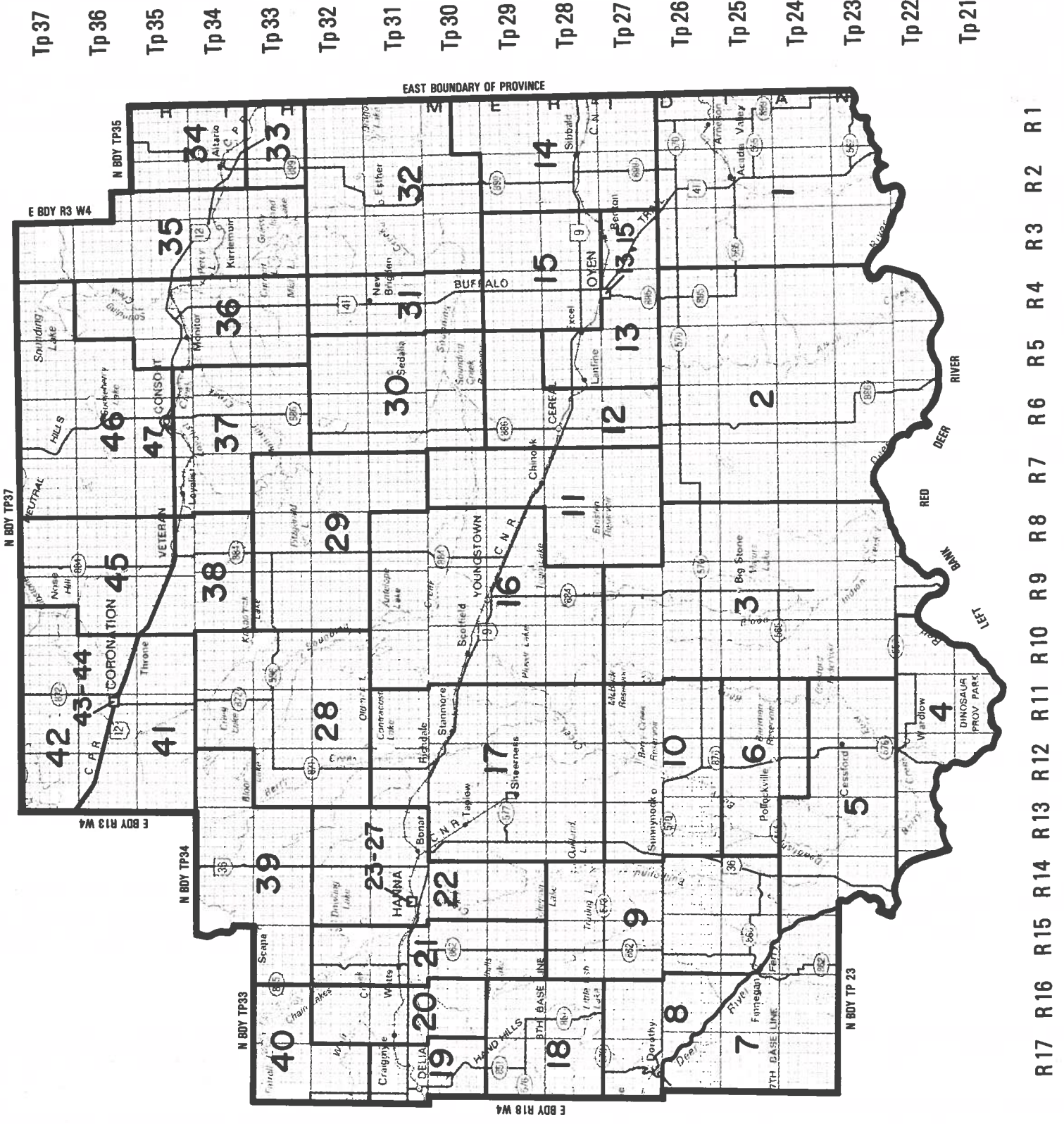
Statement of Results By Poll

* Elected Candidate							Poll Results			
Poll No.	Name of Poll	Baldwin William Archie IND	Curry Lyal LIB	*McClellan Shirley PC	Ramsay Jack WCC	Rourke Heather NDP	Names on List	Valid Ballots	Rejected Ballots	Voter Turnout
01	Acadia Valley	2	16	147	34	7	336	206	-	61.31
02	Cappon	-	39	52	12	9	190	112	-	58.95
03	Big Stone	1	30	16	8	2	76	57	-	75.00
04	Steveville	2	12	10	6	3	75	33	-	44.00
05	Cessford	1	31	8	13	21	112	74	-	66.07
06	Pollockville	-	10	11	4	1	34	26	-	76.47
07	Range Coulee	-	-	7	-	2	50	9	-	18.00
08	Dorothy	-	14	8	5	3	50	30	-	60.00
09	Homestead Coulee	-	15	26	15	7	97	63	-	64.95
10	Sunnynook	-	7	15	9	1	50	32	-	64.00
11	Chinook	-	6	25	7	7	76	45	-	59.21
12	Cereal	-	9	115	20	19	264	163	-	61.74
13	Oyen West	1	26	187	44	18	491	276	2	56.62
14	Sibbald	1	11	86	13	4	176	115	1	65.91
15	Oyen North	1	14	176	29	22	414	242	-	58.45
16	Youngstown	-	87	65	41	11	400	204	2	51.50
17	Richdale-Sheerness	-	15	41	36	1	138	93	-	67.39
18	Handhills	-	3	24	7	2	86	36	-	41.86
19	Delia	2	16	63	34	35	255	150	1	59.22
20	Craigmyle	2	6	38	29	13	206	88	-	42.72
21	Hanna Rural West	-	8	31	21	11	119	71	1	60.50
22	Hanna Rural East	-	26	50	61	27	250	164	-	65.60
23	Hanna North	1	32	86	40	33	392	192	-	48.98
24	Hanna East	2	28	78	37	44	413	189	-	45.76
25	Hanna South	2	23	65	58	34	352	182	-	51.70
26	Hanna West	2	57	96	55	48	532	258	1	48.68
27	Hanna Central	1	52	87	45	32	450	217	-	48.22
28	Spondin	-	8	43	9	1	115	61	-	53.04
29	Hemaruka	-	5	56	8	2	117	71	-	60.68
30	Sedalia-Naco	1	6	52	5	15	111	79	-	71.17

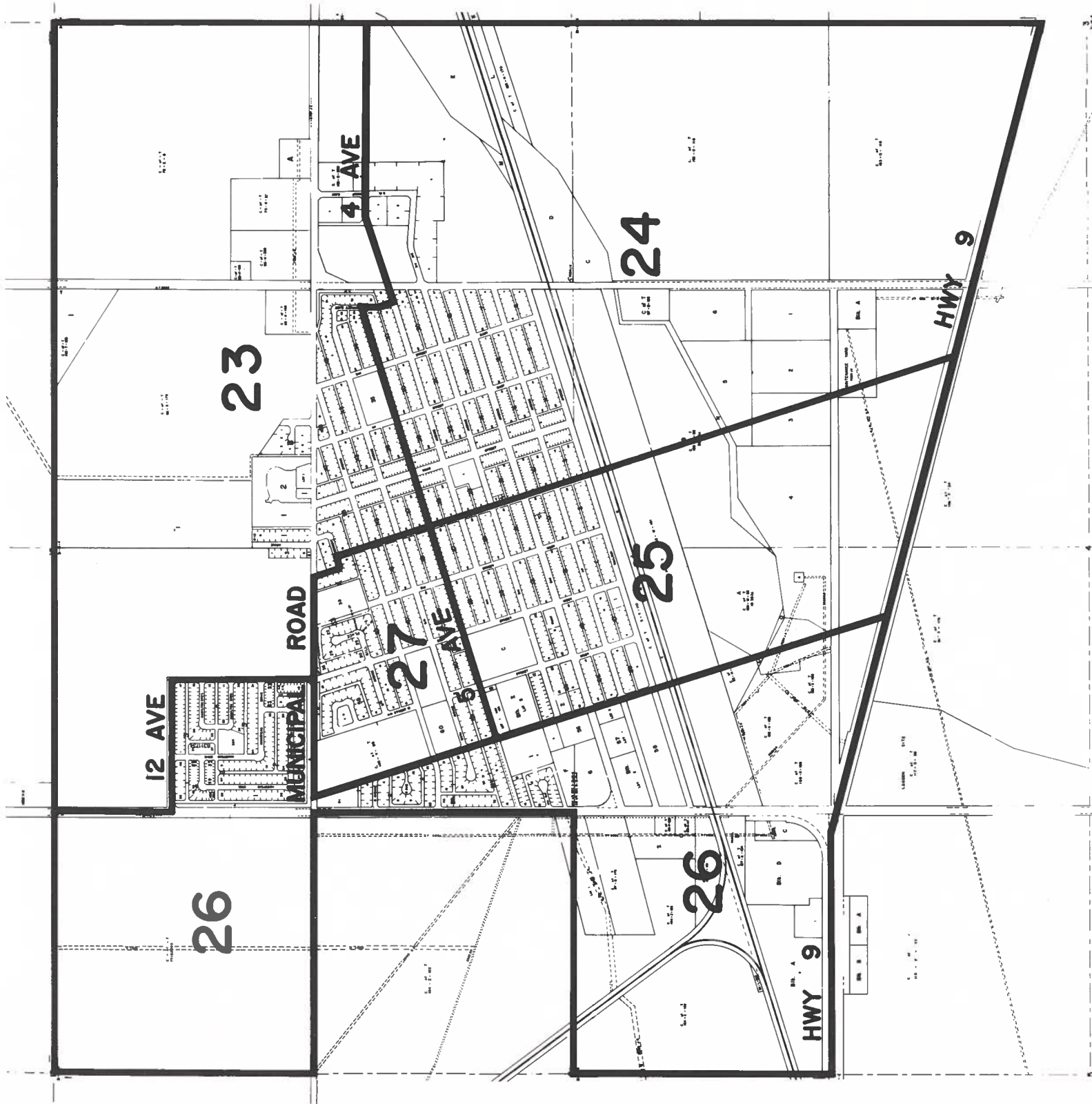
Statements of Results By Poll

* Elected Candidate							Poll Results			
Poll No.	Name of Poll	Baldwin William Archie IND	Curry Lyll LIB	*McClellan Shirley PC	Ramsay Jack WCC	Rourke Heather NDP	Names on List	Valid Ballots	Rejected Ballots	Voter Turnout
31	New Brigden	-	-	44	2	20	91	66	-	72.53
32	Esther	-	3	76	10	21	150	110	-	73.33
33	Compeer	-	2	28	17	3	84	50	-	60.24
34	Altario	-	2	31	26	1	106	60	-	56.60
35	Kirriemuir	-	2	48	9	-	115	59	-	51.30
36	Monitor	1	8	43	6	2	134	60	-	44.78
37	Consort Rural South	1	5	53	14	3	142	76	-	53.52
38	Veteran Rural South	1	22	88	27	6	327	144	-	44.04
39	Garden Plains	2	7	31	34	13	160	87	-	54.38
40	Victor	-	4	33	17	5	101	59	-	58.42
41	Coronation Rural South	-	9	30	34	8	158	81	-	51.27
42	Coronation Rural North	1	18	44	21	6	212	90	-	42.45
43	Coronation West	1	34	69	45	16	434	165	-	38.02
44	Coronation East	1	26	58	49	19	466	153	-	32.83
45	Veteran Rural North	1	6	26	17	8	105	58	-	55.24
46	Consort Rural North	-	9	54	35	1	188	99	-	52.66
47	Consort	-	25	139	41	23	492	228	-	46.34
48	Hanna Advance	-	12	36	17	16	81	81	-	-
49	Oyen Advance	-	6	44	7	-	57	57	-	-
50	Consort Advance	-	-	9	4	-	13	13	-	-
51	Coronation Advance	-	7	12	-	-	19	19	-	-
52	Consort-Coronation Treatment Centre	5	3	23	4	2	37	37	-	-
53	Hanna, Cereal, Oyen Treatment Centre	-	6	31	8	5	50	50	1	-
54	Incapacitated and Absentee	-	-	1	-	-	0	1	0	-
Summary		36	828	2,815	1,149	613	10,149	5,441	9	53.70

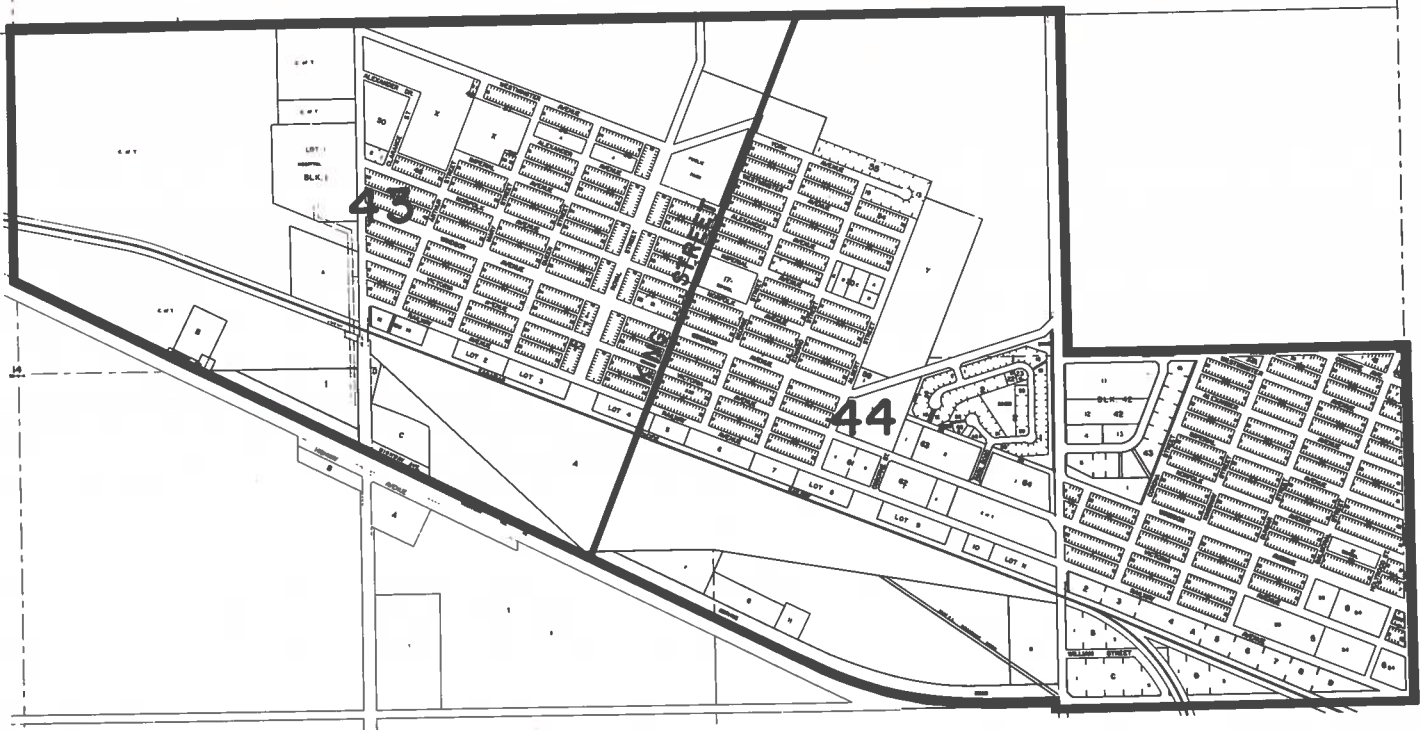
Electoral Division of Chinook



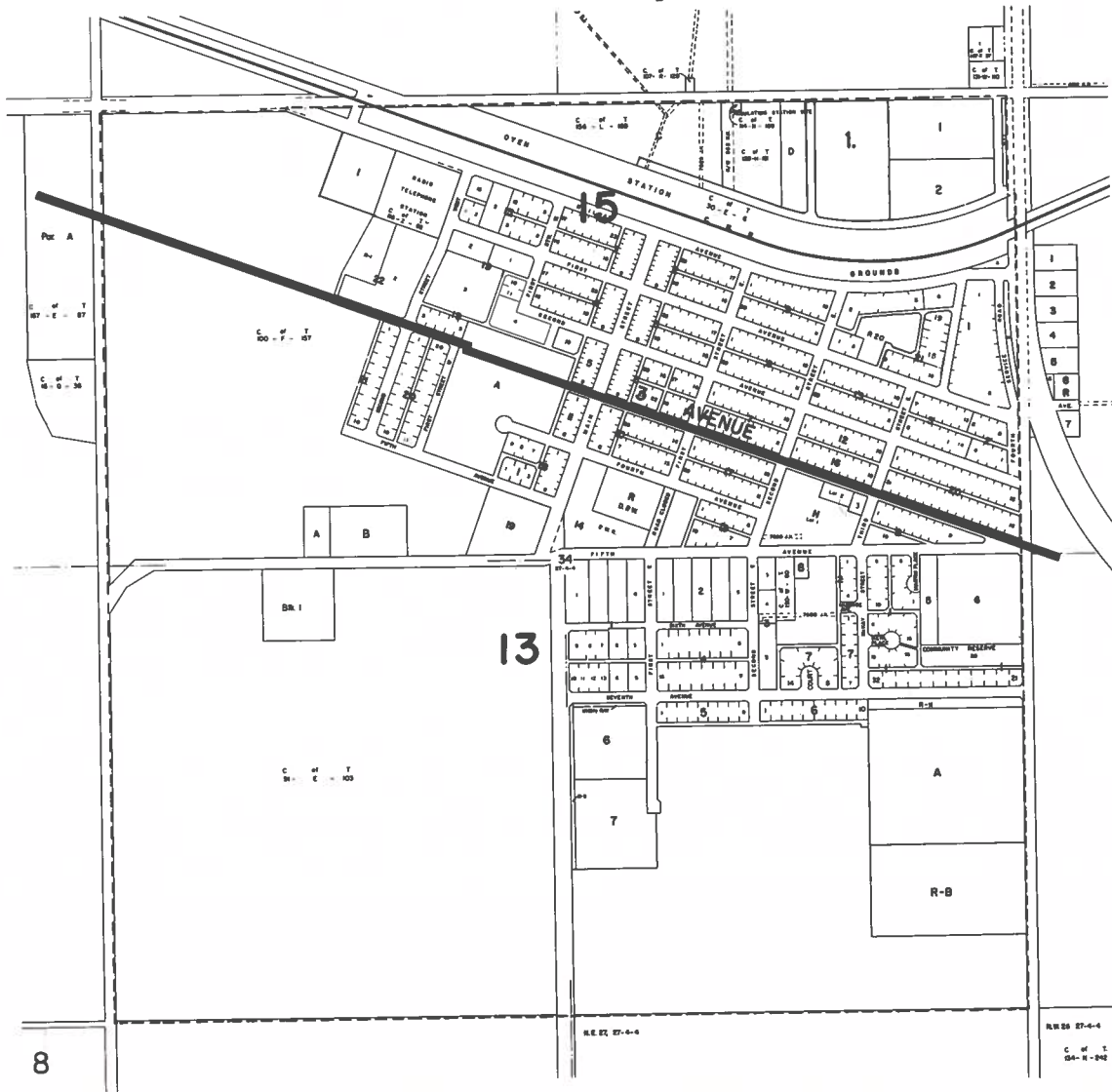
Town of Hanna



Town of Coronation



Town of Oyen



Financial Summary

Returning Officer:		Total
Fees	\$ 4,140.	
Travel	535.	
Office Rental	2,559.	
Publishing	3,891.	
Printing	782.	11,907.
Election Clerk:		
Fees	2,902.	
Travel	112.	3,014.
Supervisory Deputy Returning Officers:		
Fees	400.	
Travel	27.	427.
Deputy Returning Officers:		
Fees	10,325.	
Travel	1,546.	11,871.
Poll Clerks:		
Fees	6,100.	
Travel	271.	6,371.
Support Staff:		
Wages	844.	
Travel	482.	1,326.
Polling Place Rental:		2,565.
Office of the Chief Electoral Officer:		
Maps, Printing and Transportation		989.
	Total	<u>\$ 37,144.</u>

